

Company Profile

September, 2024

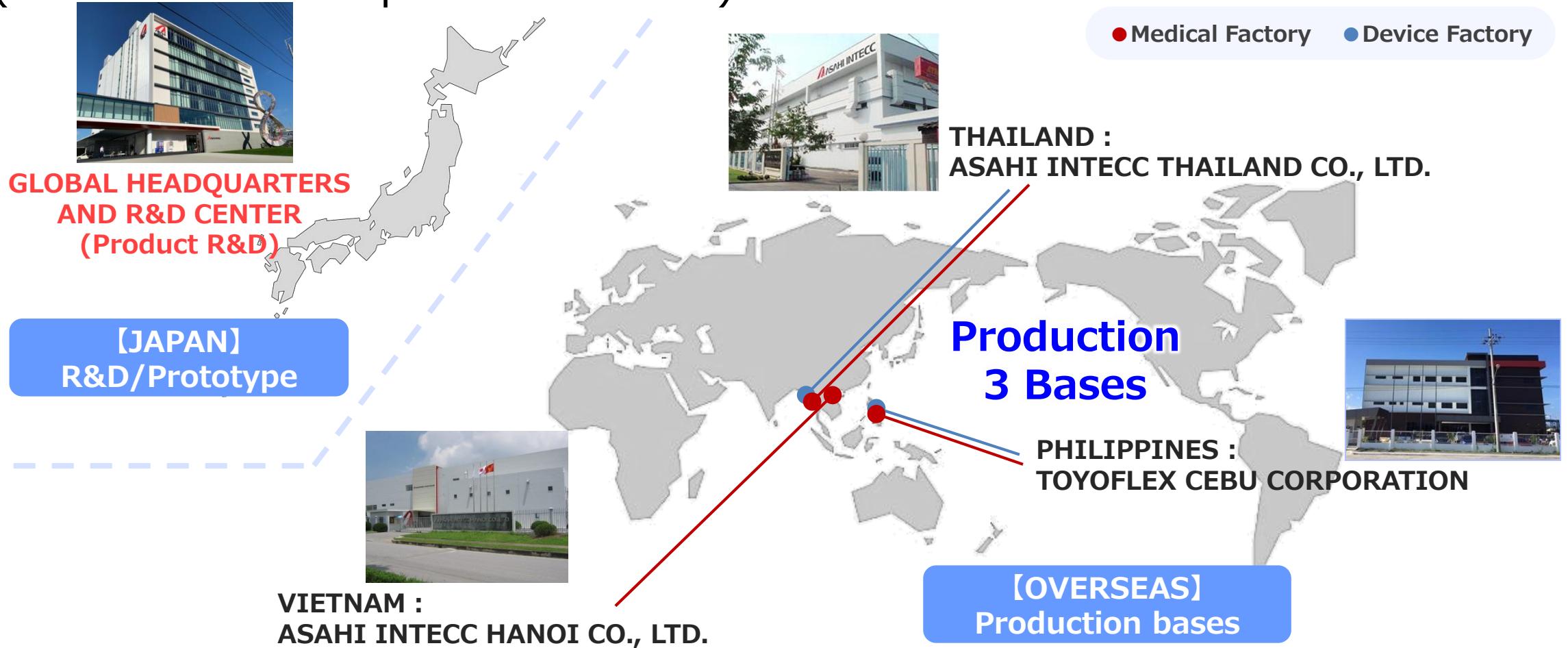
A decorative graphic consisting of multiple overlapping, wavy lines in shades of gray and black, flowing from left to right across the lower half of the page.

Company Profile

Securities code: 7747
Prime of Tokyo Stock Exchange
Premier of Nagoya Stock Exchange

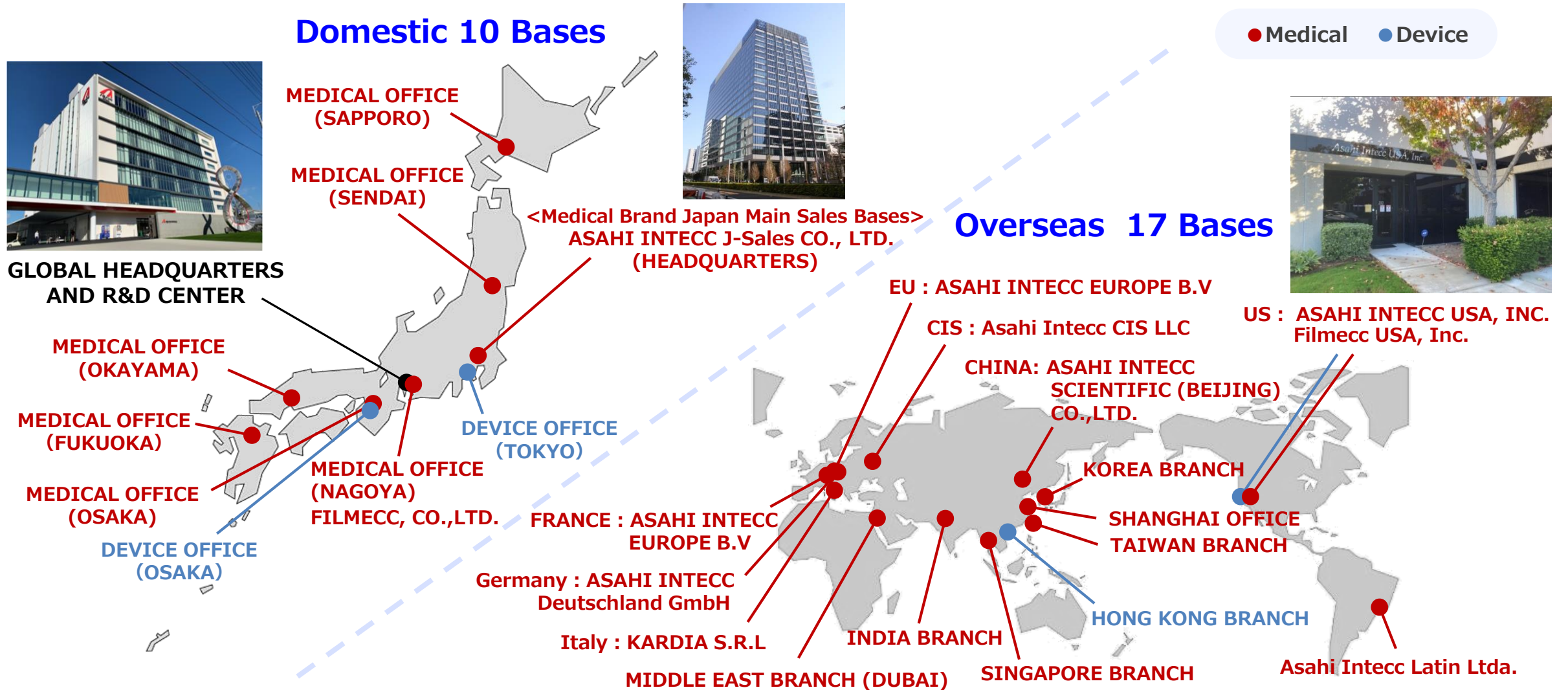
Company Name	ASAHI INTECC CO., LTD.
Head Office	3-100 Akatsuki-cho, Seto-shi, Aichi, Japan
Representative	Kenji Miyata, President & CEO
Date of Establishment	July 8, 1976 (Currently, the 49th term)
Business Operations	Development, manufacturing and sale of medical devices Development, manufacturing and sale of ultra-fine stainless steel wire ropes, terminal processed products, etc.
Capital	18,860 Mil. Yen
Number of Employees	1,088(Asahi Intecc only) , 9,371(Total)
Related Company	17 Consolidated subsidiaries, 5 Non-consolidated subsidiaries
R&D base	Japan, US, Thailand
Manufacturing base	Thailand, Vietnam, Philippines
Sales base	Japan, US, Netherlands, France, Germany, Italy, Russia, China, South Korea, Taiwan, Hong Kong, Singapore, Thailand, India, UAE, Brazil

Global Network – R&D/Production (Coexistence of Japan & Overseas)



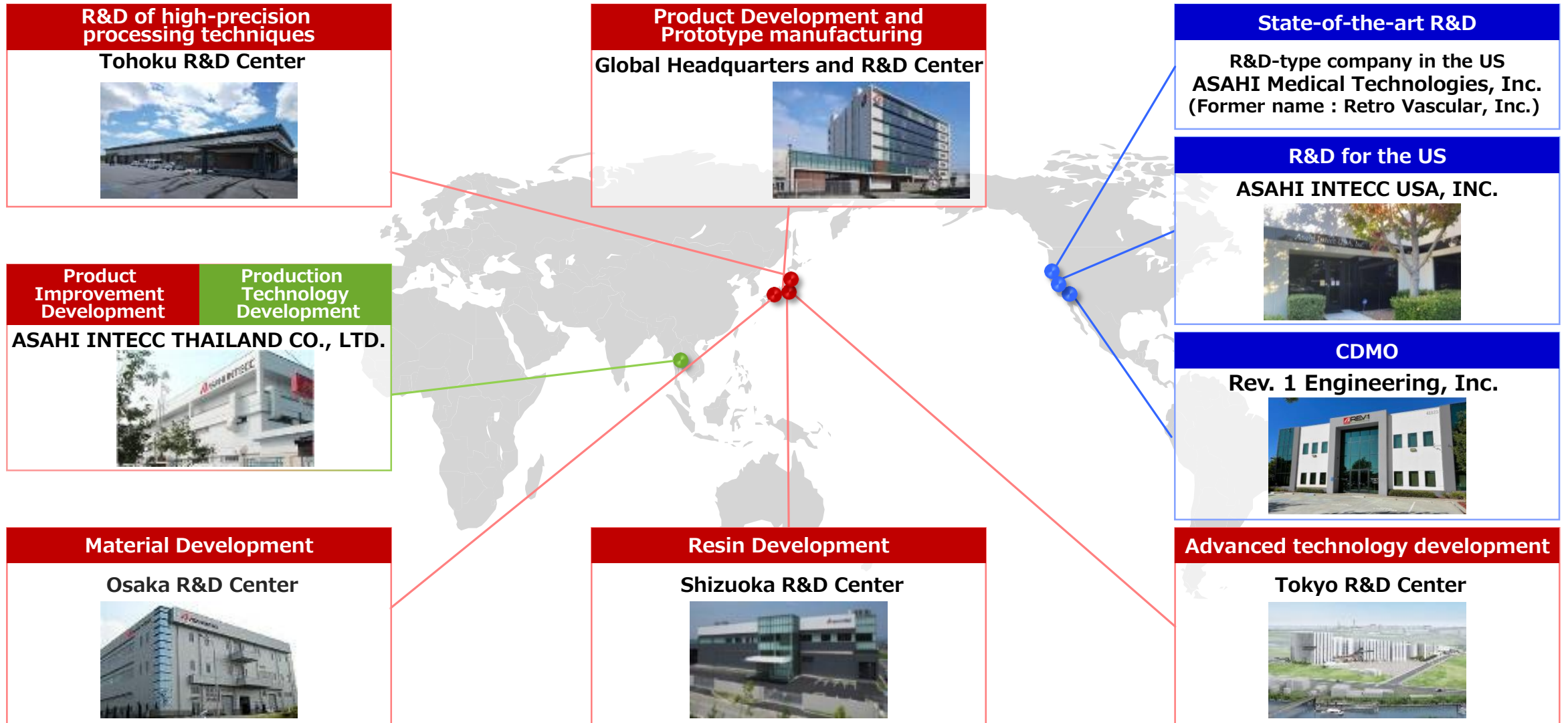
Japan conducts R&D and prototyping; mass production takes place in overseas factories.

(Reference) Main Sales Bases



(Reference)

Development of R&D System Optimized for Global Expansion



Business Fields and Divisions

■ FYE June 2024

Revenue 107,547Mill. Yen

Operating income 22,135Mill. Yen

Medical Division
(**Medical Brand / Medical OEM**)

Medical Field
(approx. 96%)

Industrial Field
(approx. 4%)

Device Division
(**Medical Components / Industrial Components**)



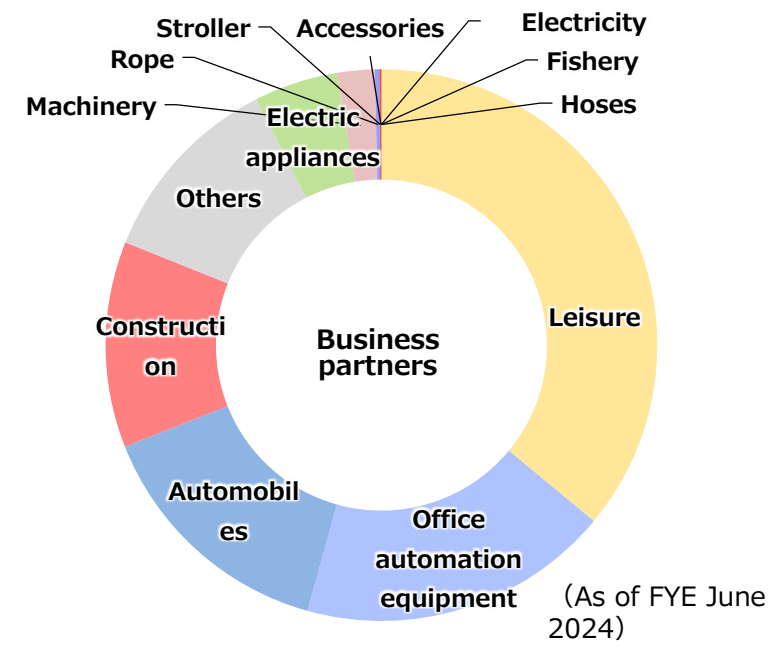
Main Products of Device Division (Industrial Components)

- Develop, manufacturing and sales of precision stainless steel wire rope (less than 2mm diameter)
- Market
 - Rope : Automobile, construction and fishing industries
 - Terminal fitted : office automation, baby strollers, machineries, accessories, game consoles
 - Charge wire : office automation, air cleaners, etc.



Wide Range of Applications from Most-advanced Devices to Household Goods

<p>GLOBERIDE, Inc. Fishing wire</p>	<p>Golf shoes wire</p>	<p>Air-conditioner with filter cleaning function</p>
<p>Smoke exhaust system</p>	<p>Copier driving wire</p>	<p>Stroller</p>
<p>Accelerator wire</p>		



Main Products of Medical Division (OEM), Device Division (Medical Components)

■ Medical Division (OEM Supplies)

Tube and various types of guide wires, etc.,
used for endoscopy or treatment devices

■ Device Division (Medical Components)

Hollow cable tube, Stainless steel rope, other
medical device components



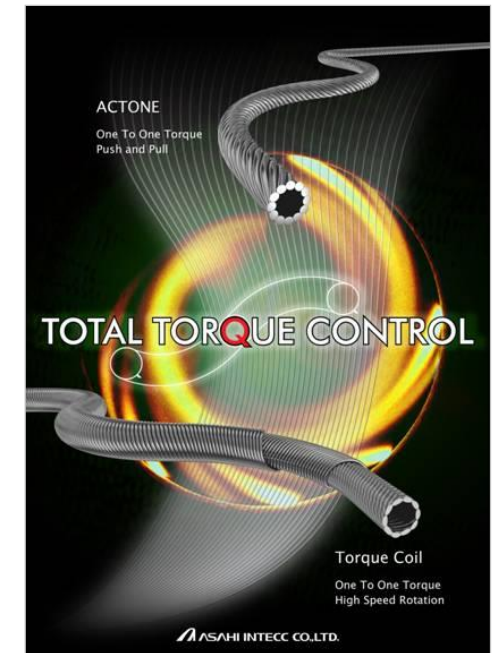
**FFR Guide Wire
For Boston Scientific**



**ROTA Wire
For Boston Scientific**



**Wire rope/tube
Example: endoscopic accessory**



ACT ONE

Main Products of Medical Device

Guide Wires and Catheters for Treatment

Cardiovascular

- **PCI Guide Wires**
- PCI Guiding Catheters
- PCI Balloon Catheters
- Penetration Catheters

Peripheral Vascular, Abdominal Vascular, Cerebrovascular Systems

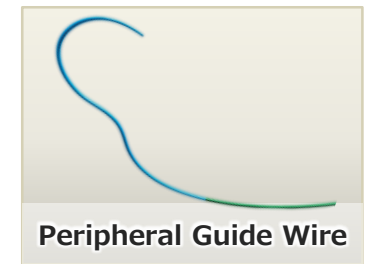
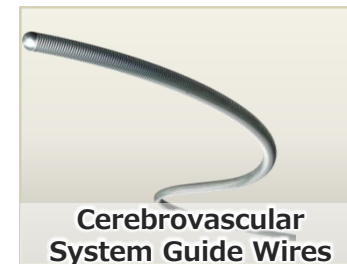
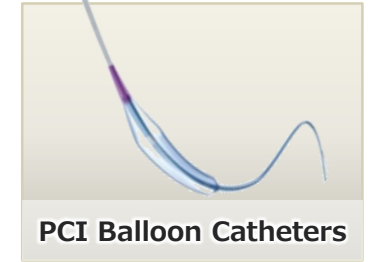
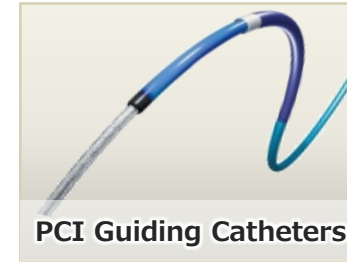
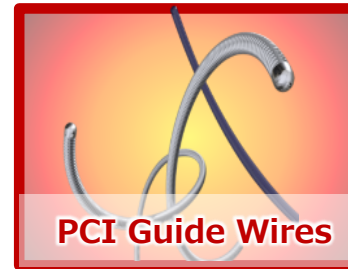
- Peripheral Guide Wires
- IVR Guide Wires
- Cerebrovascular System Guide Wires

Guide Wires and Catheters for Examination

- Guide Wires for Angiography
- Catheters for Angiography

OEM supplies

- Products other than Cardiovascular Catheters



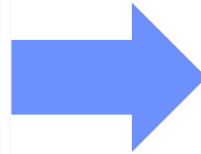
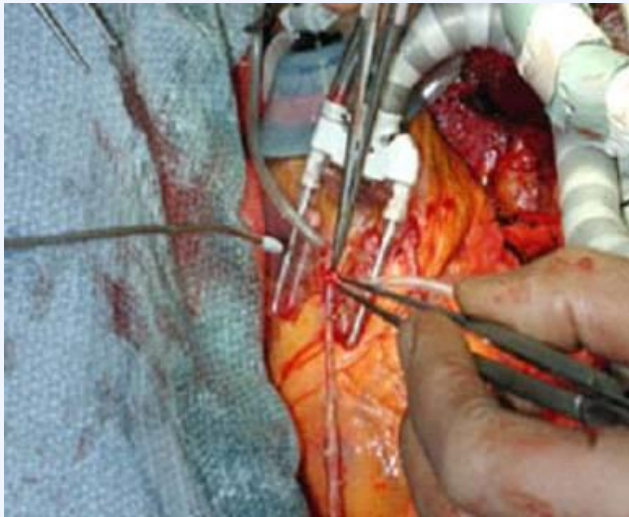
Our main product at **47.4%** (FYE June 2024) of Revenue

PCI (Percutaneous Coronary Intervention)-1

- Therapy for coronary artery disorder (angina, myocardial infarction)
- Recover the blood flow after dilatation of stenosed lesion
- Treatment through femoral or radial artery without laparotomy and thoracotomy to minimize the mental and physical burden on patients.

Surgical Therapy

Bypass Operation



Interventional Therapy

Minimally Invasive Treatment (PCI Treatment)



PCI (Percutaneous Coronary Intervention) -2

Essential Devices of PCI Treatment (Three Sacred Treasures)

3 Devices Essential for PCI Treatment

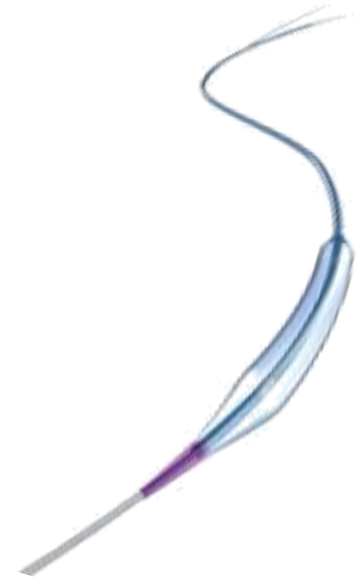
Guiding Catheters



Guide Wires



Balloon Catheters

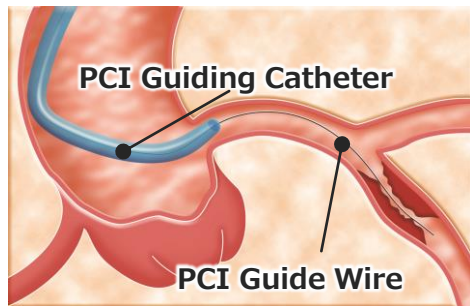


PCI (Percutaneous Coronary Intervention)-3

For PCI treatment to be successful, the PCI guidewire must reach the affected area

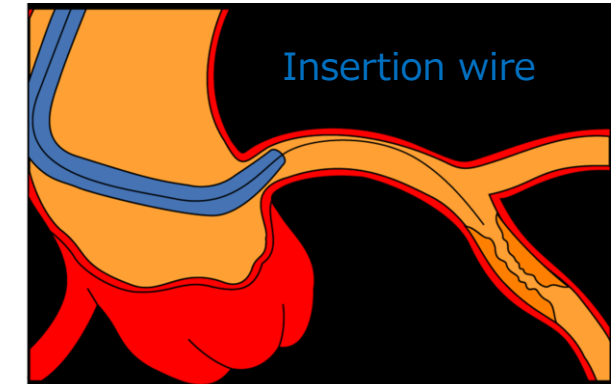
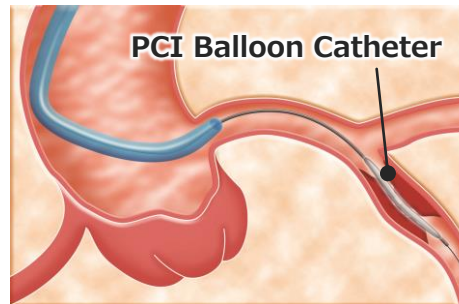
① PCI GW Advancement

Small size tube called PCI Guiding Catheter inserted in blood vessel. Advance PCI GW inside of this tube.



② PCI Balloon Catheter Tracking

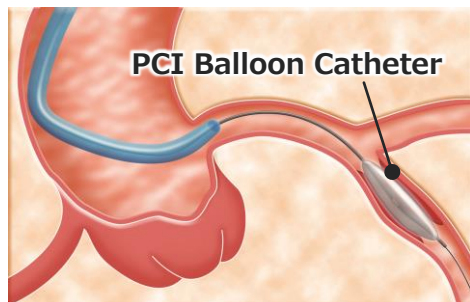
Along with PCI GW, PCI Balloon Catheter trucked over PCI GW to the point of the narrowed portion of vessel.



Explanation on next page

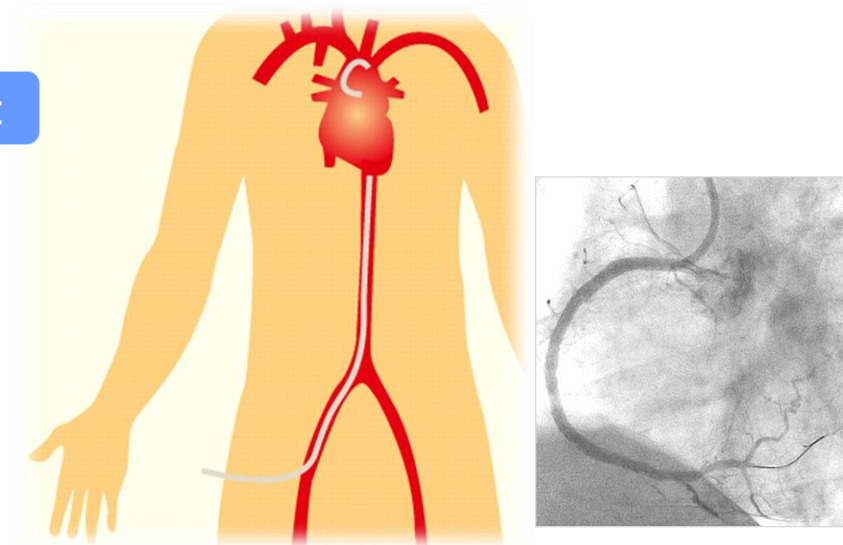
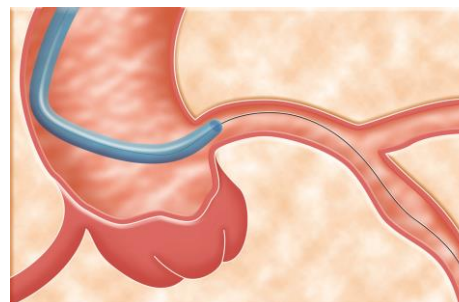
③ PCI Balloon Catheter dilatation

Dilate Balloon, then enlarge the blood vessel.



④ PCI Balloon Catheter pulled out

After Narrow portion enlarged then blood flow to recover.

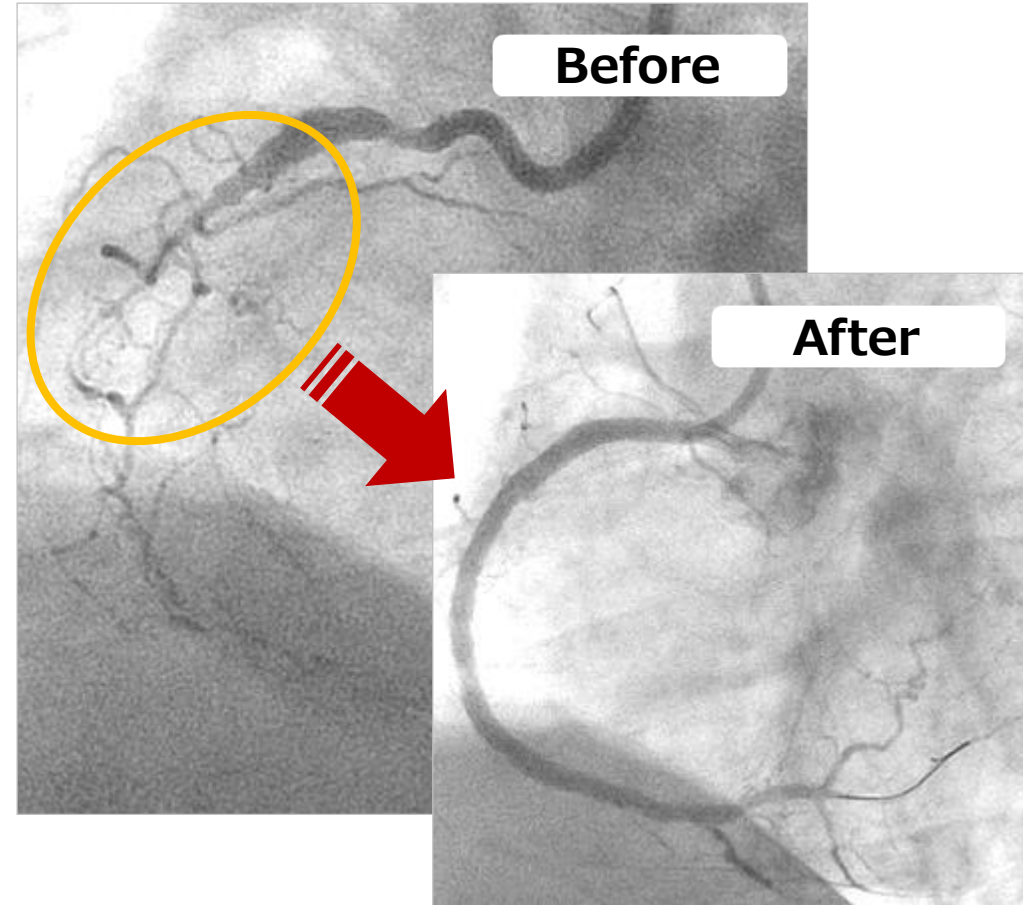


PCI (Percutaneous Coronary Intervention)-4

Comparatively easy lesions



Lesions with high difficulty



Advantage of Our PCI Guide Wire

High transmissibility of rotation(Torquability)



Tip flexibility(Safe operation)



Doctors manipulate the wire and try to transfer the feeling of finger tip to the distal end of wire.

Source of competitiveness: 4 core technologies

Control of hardness and diameter



Wire drawing technology

Micron-level molding



Wire forming technology

Integrated production system handling materials down to the finished products

Rotation following capacity



Torque technology

Ultra-thin film coating

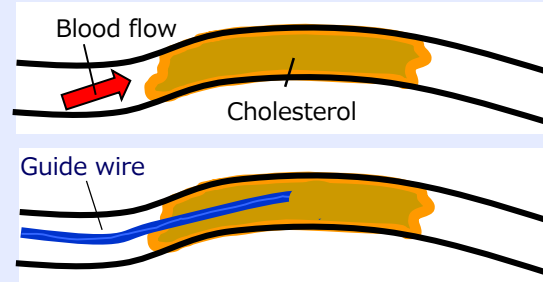


Resin coating technology

Our Company's Flagship CTO Treatment Implementation of PCI Treatment in CTO Cases

■ What is CTO ? (Chronic Total Occlusion)

- A disease of hard calcification
- Completely clogged up blood vessel



【 Level of heart disease 】

Healthy person → Risk holder

Lifestyle-related diseases

Cardiovascular occlusion

CTO
(Chronic Total Occlusion)

Latent patient

Previously realm of surgical operations

In the era when the Japanese market depended on imports for PCI GW, Japanese KOL requested major manufacturers to make a wire for CTO PCI but were turned down.

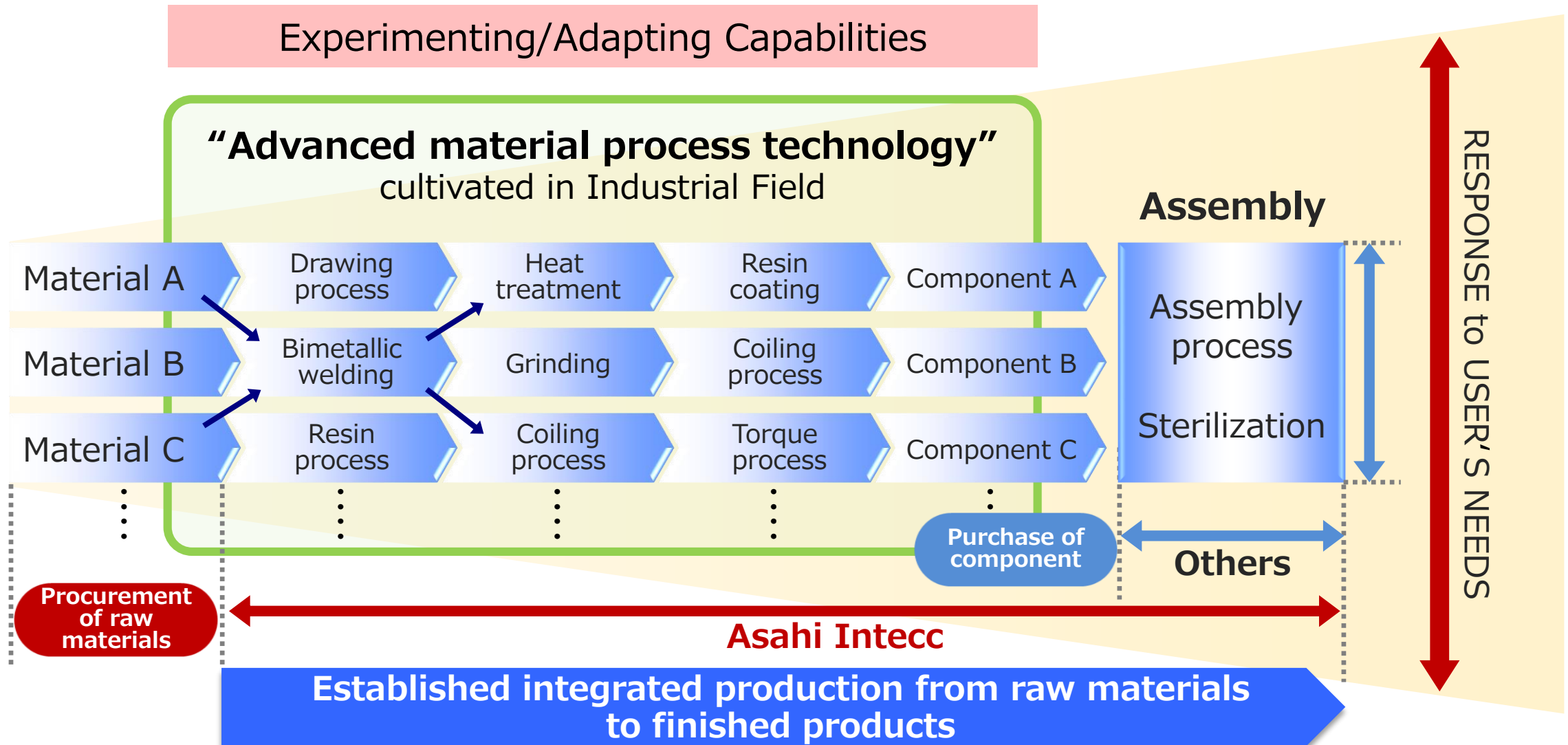
※KOL(Key Opinion Leader)・・・A physician with influence over the direction of PCI.

PCI GW for CTO Procedures (1995)

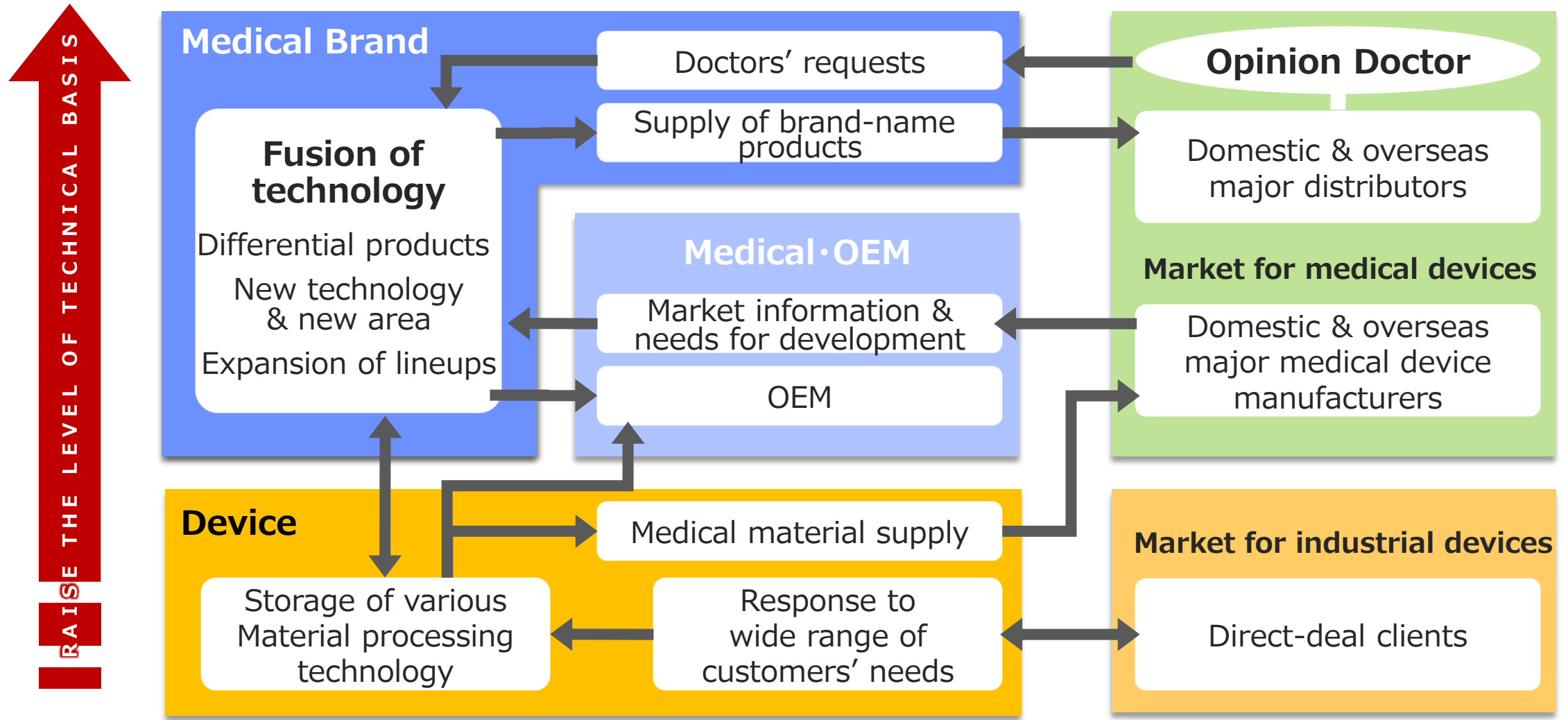
Aggressive expansion of CTO cases via minimally invasive procedures

Our Strength and Feature

“Competitive Power in Medical Devices” Based on “High Technology for Raw Material”



Our Strength and Feature Merits of Segmental Structure (fusion/combination/circulation)



Caution Regarding Information Presented

All forward looking statements contained herein, including revenue forecasts, outlooks, and strategic plans, are based on the best currently available data; however, risk and uncertainty are involved in these statements.

Please note that actual results may differ greatly from plans presented here.

[IR contact]

Asahi Intecc Co., Ltd.
corporate strategic office

TEL 0561-48-5551

URL <https://www.asahi-intecc.co.jp/en>